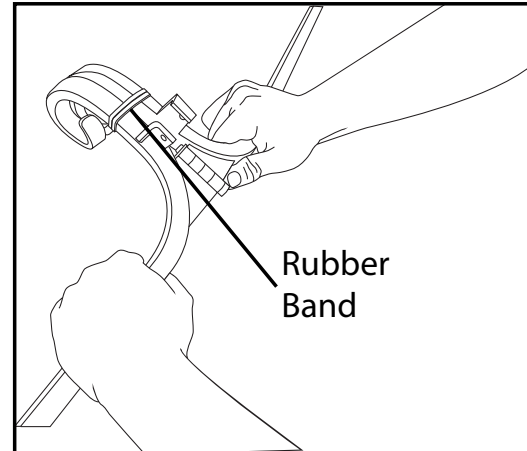


# ADJUSTABLE GARLAND HANGER

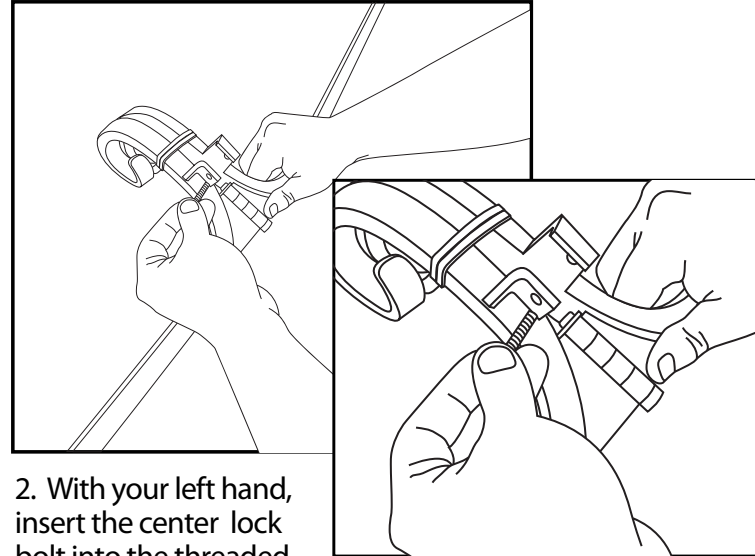
## IMPORTANT! READ THESE FIRST!!

PLEASE ALSO READ THE FULL INSTRUCTIONS ALSO INCLUDED IN THIS PACKAGE.

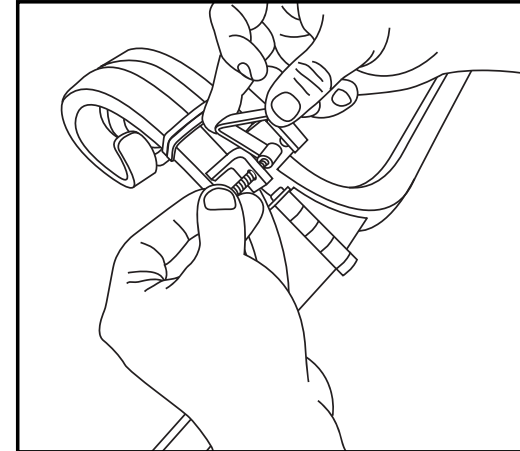
### SUPPLEMENTAL INSTRUCTIONS: INSTALLING THE CENTER LOCK BOLT & "L" BRACKET



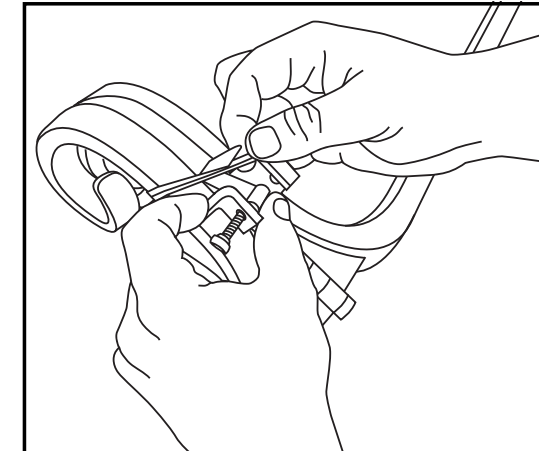
1. After you have assembled the two Hanger half pcs and inserted the hinge pin and clip (See full instructions also included in this package), set the framer on your lap so the bottom is facing towards you. Go ahead and slip a rubber band over the front scroll as shown.



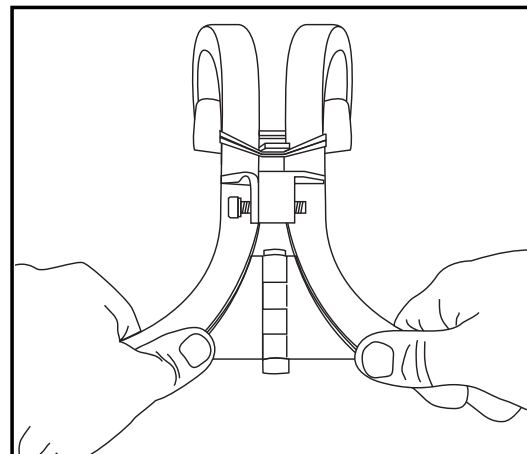
2. With your left hand, insert the center lock bolt into the threaded bottom lock bracket. Screw this in about 1/3 of the way.



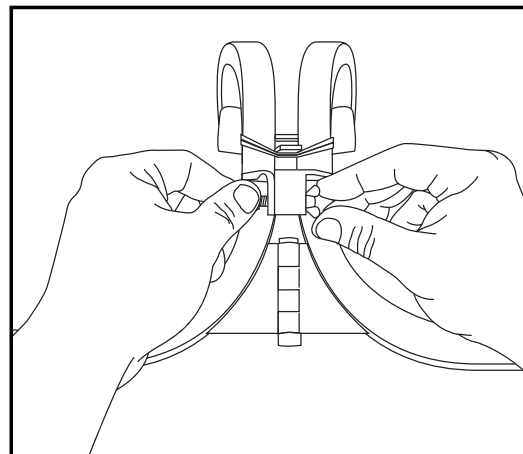
3. With the center lock bolt threaded in a ways, slide the "L" Bracket on onto the end of the bolt as shown. Once this bracket is on the bolt, continue to thread the bolt the rest of the way. Note the direction of the "L" bracket above: It must be positioned so the bend of the "L" shape is pointing towards the front scrolls.



4. Slide the "L" Bracket under the rubber band. This will keep it out of the way during installation.



5. Still sitting on your lap, the framer should now look like this. The center lock is now ready for installation, Read the full instructions to finish installation.



6. After you've completed the other installation steps, you may tighten the wing nut and bolt until tight.

### IMPORTANT:

For more assembly and usage assistance, look for our instructional videos at [www.VLCPRO.com](http://www.VLCPRO.com). Also, if you have any questions or needs for replacement parts etc, please feel free to contact us via email at:

[Info@VillageLightingCompany.com](mailto:Info@VillageLightingCompany.com).

A product of



[WWW.VLCPRO.COM](http://WWW.VLCPRO.COM)

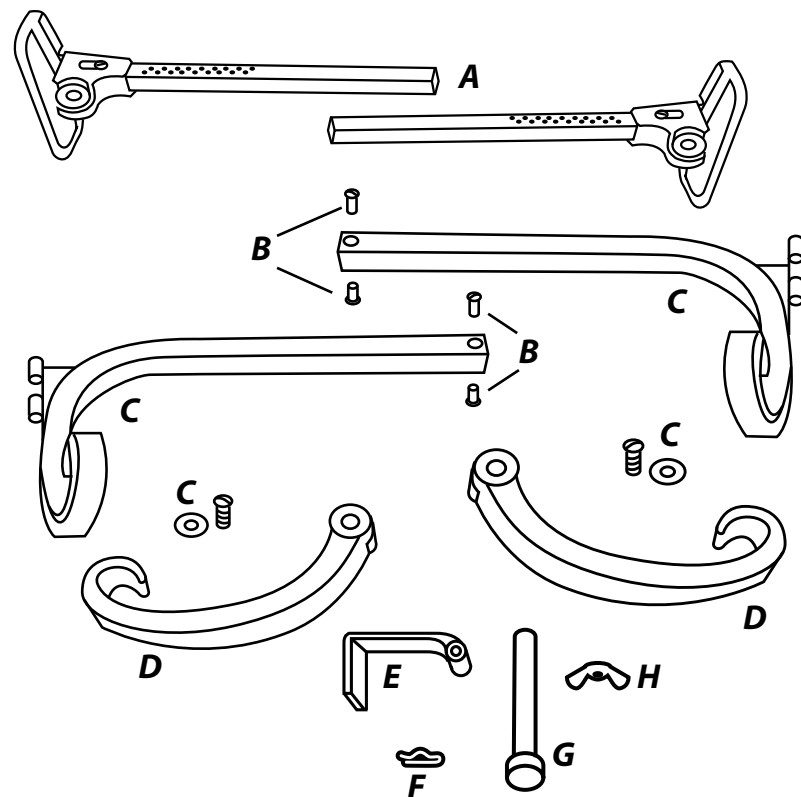
Copyright 2009 Village Lighting Co. All Rights Reserved  
Patent Pending

# ADJUSTABLE GARLAND HANGER

**GARLAND HANGER ASSEMBLY AND USAGE INSTRUCTIONS. PLEASE READ CAREFULLY!**

**IMPORTANT SAFETY INSTRUCTIONS! PLEASE READ!** For more detailed instructions, watch the online video at [www.VLCPRO.com](http://www.VLCPRO.com).

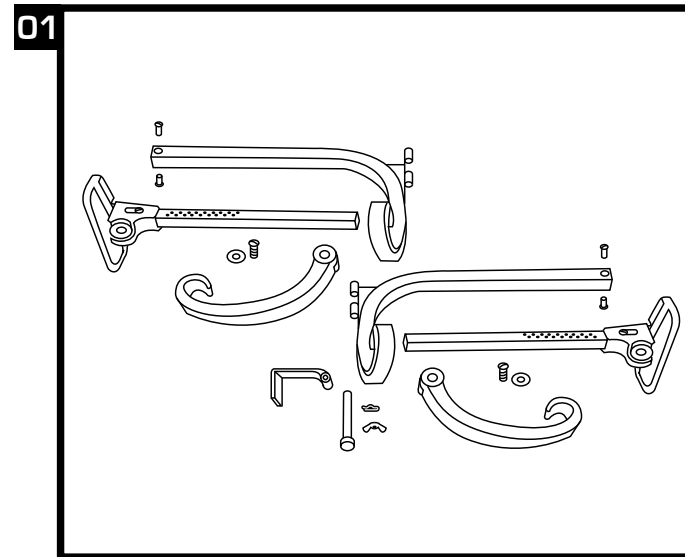
- b)** This item hangs from above your door. If over-weighted or incorrectly installed, it may fall causing damage to the framer and your décor. Falling could also result in serious injury to people standing around it. Please follow the instructions carefully and use caution when using.
- c)** Do not hang anything other than garland from the garland hanger.
- d)** **DO NOT EXCEED 20LBS OF WEIGHT** hanging from the Garland Hanger. (approx. up to 3 X 9' of garland)
- e)** The Garland Hanger uses high pressure to secure the door frame. Be careful when installing the Garland Hanger as metal hardware could pinch and cause injury.
- f)** It is recommended, for convenience and safety, that two people install this product.
- g)** If a ladder is needed, follow the safety instructions on your ladder and position in a safe place. Always have someone to assist you on the ladder for safety.
- h)** **SAVE THESE INSTRUCTIONS.**



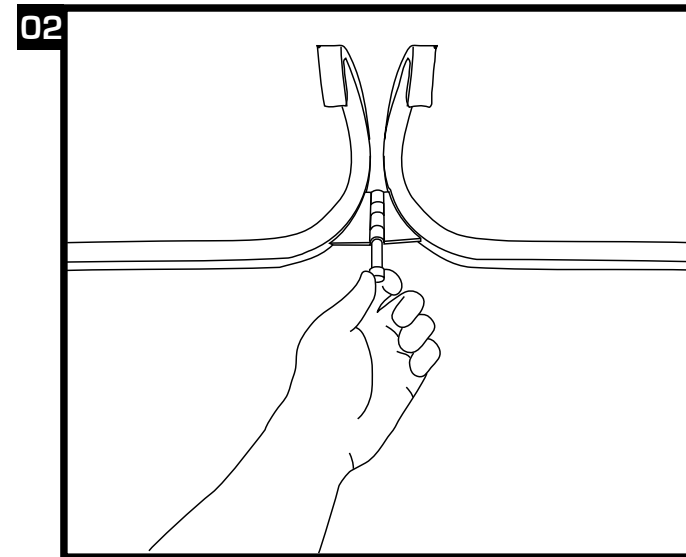
## Included Parts

- A. Left and Right adjustable pad and extension rod assemblies
- B. Adjustable rod screws X 2 sets (2 X female / 2 X male)
- C. Left and Right Garland Hanger Main Frames
- D. Wing Washers and Bolts
- E. "L" Bracket
- F. Center Hinge Pin Clip
- G. Center Hinge Pin
- H. Wing nut

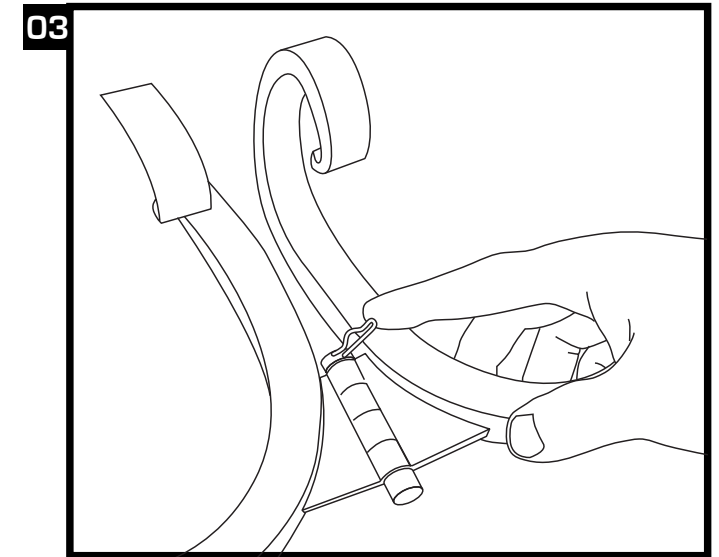
Tools Needed for assembly: Phillips screwdriver



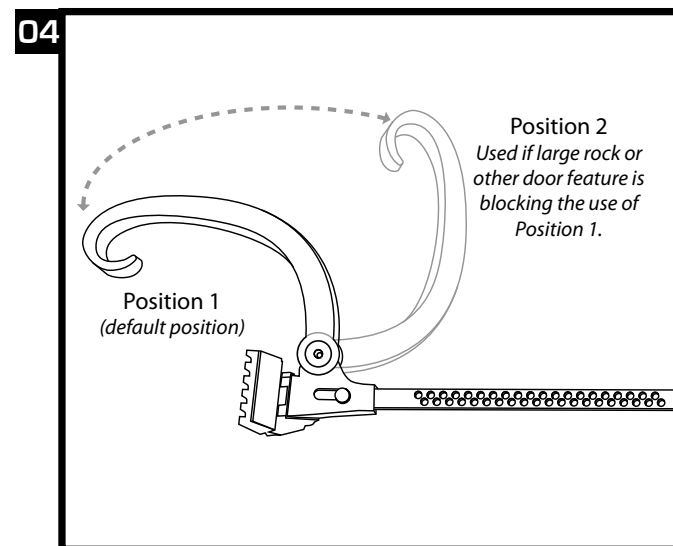
a) Carefully remove the parts from the box:



b) Place the left and right main body assembly parts together and slide the hinge pin into the center hinge. (See illustration 02) Be careful not to pinch yourself. The assembly may be a bit tricky to hold as it is hinged in the middle.

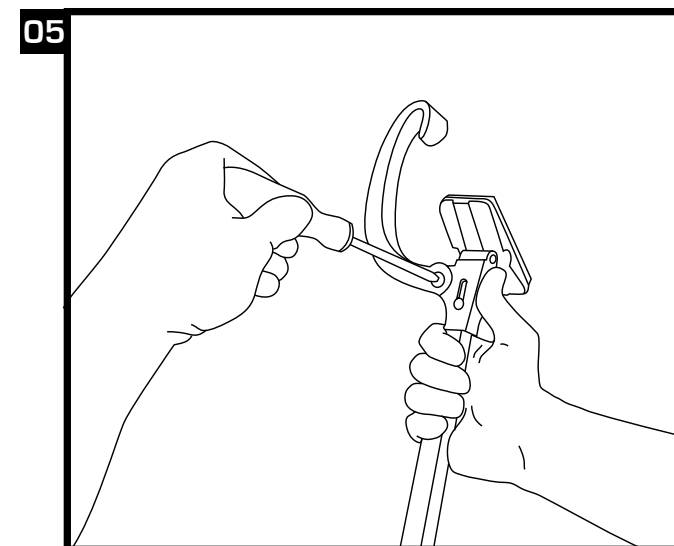


c) Insert the hinge pin clip into the hole at the end of the hinge pin to secure the pin in place. (See illustration 03)

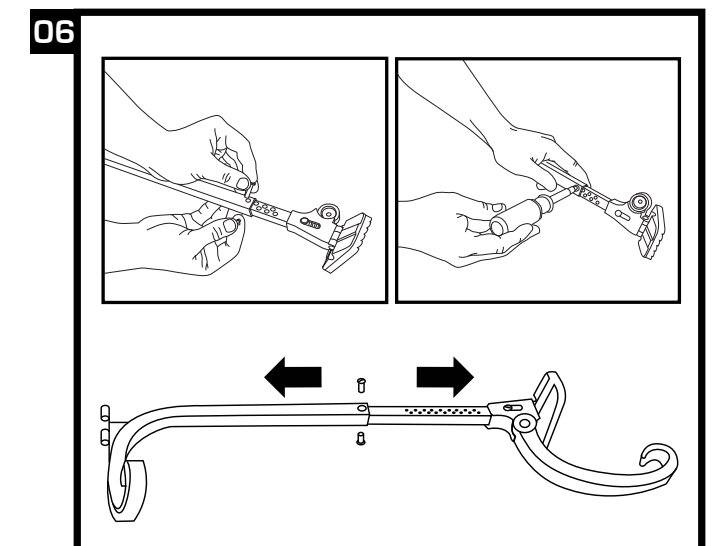


d) Assemble the wings onto the extension assemblies as shown (See illustration 04) by positioning the wing onto the hub to the correct angle, on the correct assembly side (left or right).

**NOTE:** If you have a tight corner on the side of the door OR have surfaces such as rock or brick extending far out from the door frame, you may want to have the wing positioned in the forward facing position 2. Otherwise, use the side facing position.



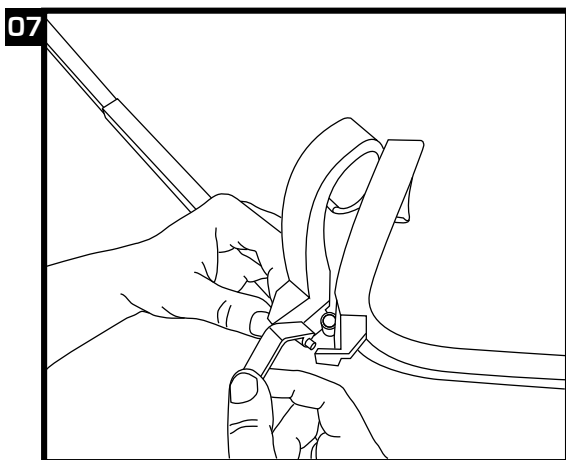
d cont.) Then insert and tighten the Wing installation screws until tight. (See illustration 05)



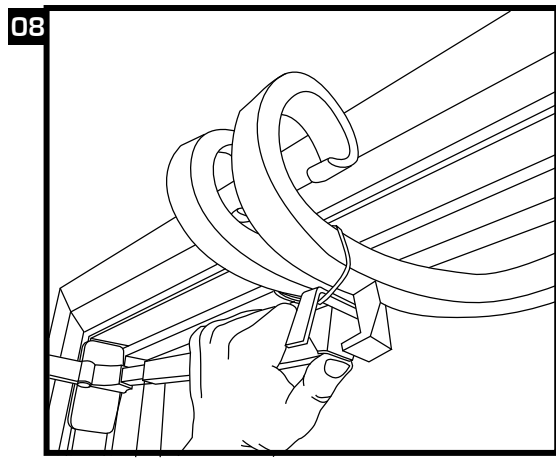
e) Insert the left and right extension rod assemblies into the main body tubes. **NOTE:** There is a LEFT and a RIGHT assembly rod and wing etc. (See illustration 06) These adjustment rods can be adjusted to fit a variety of doors by sliding in and out of the main Garland Hanger body.

**Continued on back**

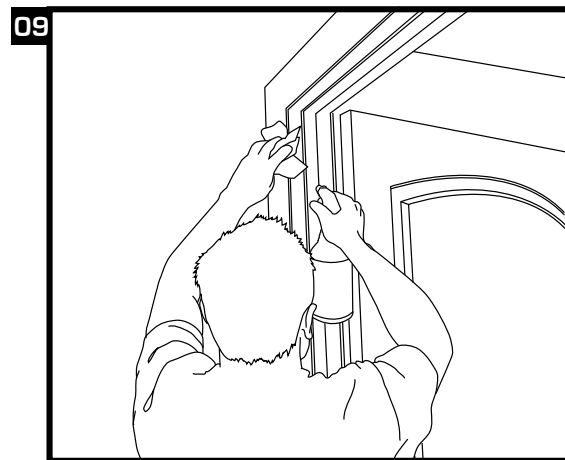
## Garland Hanger Usage and Assembly Instructions (cont')



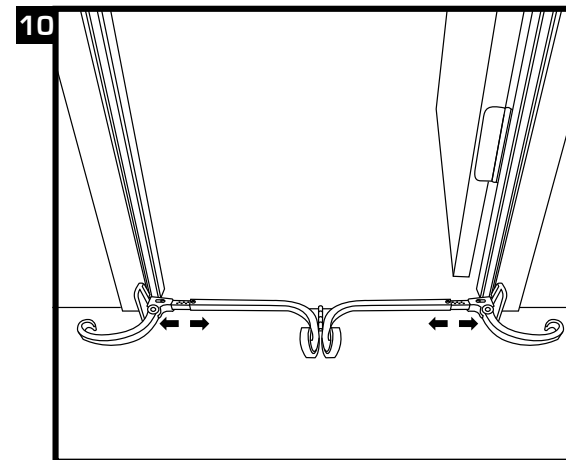
**h) DOUBLE DOOR FRAMER ONLY:** Carefully hinge open the two halves of the Garland Hanger exposing the end of the center locking bolt. Slide the "L" bracket onto the locking bolt as shown. Please make sure it's facing the right direction (as Shown). With the "L" Bracket installed, lay the Garland Hanger flat on the ground once again. After installation, this bracket will lay back flat between the two halves of the Garland Hanger and provide stability to the Hanger.



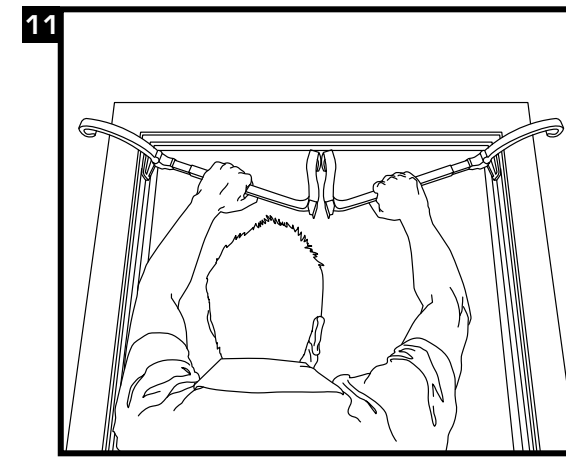
**h) TIP:** For easier installation: Slide a rubber band (provided) over the top of the middle of the Hanger middle scroll pcs. Position the rubber band at the bottom of the framer as shown. Hang the "L" Bracket from the rubber band. This will insure the "L" Bracket doesn't fall down and get in the way during installation.



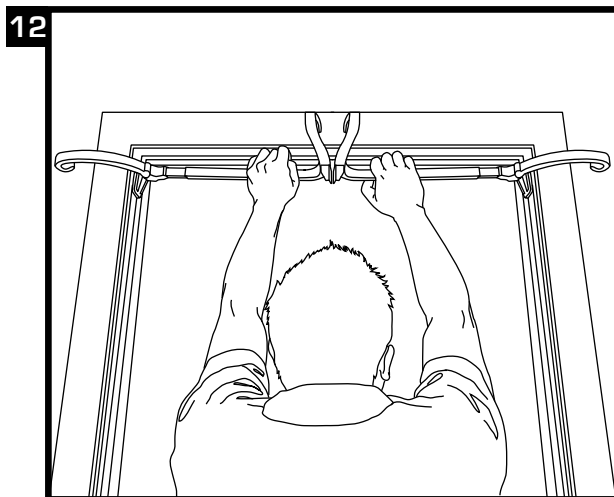
**g)** Clean the door framer at the top left and right where the door Garland Hanger pads will be placed to ensure a secure fitting



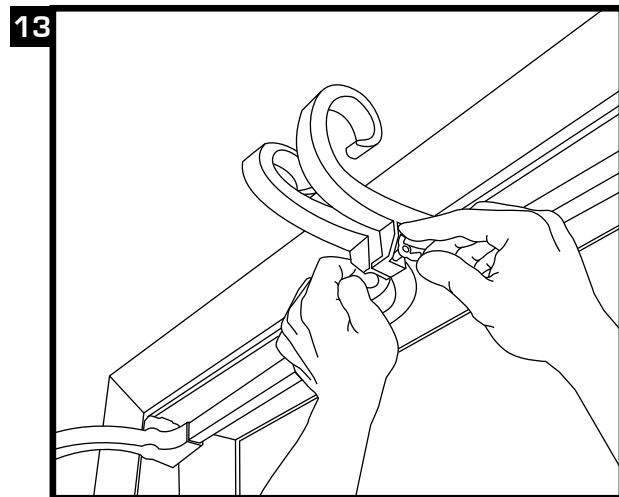
**f)** With the framer now assembled, position the framer at the outside the doorframe you wish to install it onto. (See illustration 10) With the framer centered in the doorway, slide the tension rod assemblies outward (each side evenly) until the pads are approximately 1/4-1/2" longer on each side than the doorway you wish to insert the Garland Hanger into. Find the closest adjustment hole to this desired length, and insert the Extension Rod Locking screw and bottom bolts. You may want to just insert the female screw first, just to test the Hanger size, then add the final screw.



**h)** With the wing nut in hand, and both extension tubes locked, carefully pick up the framer and position each rubber pad of the Garland Hanger into the top left and right corner of the door frame. Keep the Hanger center hinge slightly angled sloping downward in the middle while you place the pads into position.



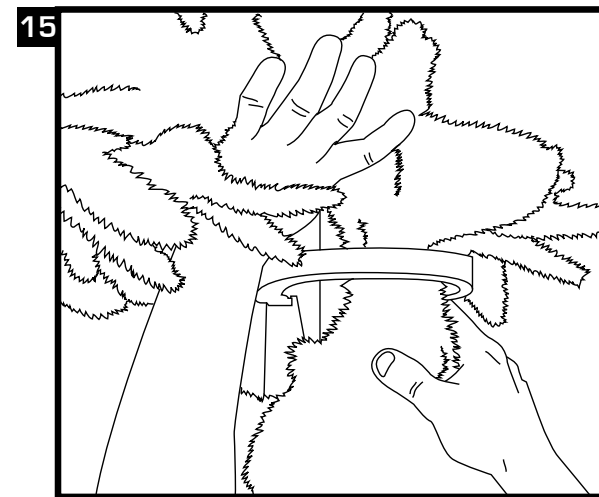
**i)** Once the pads are put into position, push upwards on the center of the Hanger until it locks in the center. **TAKE CARE NOT TO PINCH YOUR FINGERS WHEN IT CLOSES.** As you push upwards, you should meet some resistance as the Hanger locks into place. If the pads are adjusted too loose, you will not feel much resistance and it will feel too loose. If the adjustment is too tight, you will not be able to push the Hanger into the horizontal position. Adjust the pads one setting, one side at a time, until the fit feels good and tight. You don't have to adjust each side each time. One side might be enough.



**j)** Once the framer bottom hinge meets at the middle and stops, place the wing nut onto the bolt in the center and tighten. **DO NOT LET GO OF THE FRAMER** until you have tested the grip and are satisfied it is sturdy.



**To hang the garland:** Once the Garland Hanger is firmly in place, Take the piece of garland you wish to hang and lift it up to the center scroll piece of the Garland Hanger and **CONTINUE** to hold the weight of the garland. **DO NOT** hang all the weight of the garland from the center of the Garland Hanger only. Once the center of garland is found, drape the two sides over each wing.



**NOTE:** The garland hanger is designed to create a tight fit between the garland and the door frame. You may need to slide just the center wire or core of the garland underneath the framer wing, then fluff the garland around it. It may be a tight fit to slide the garland core under the wing, but this will insure that the garland doesn't move out beyond the wing.

### QUESTIONS? NEED HELP?

Please feel free to contact us as [info@villagelightingcompany.com](mailto:info@villagelightingcompany.com) or visit us online at [www.vlcpro.com](http://www.vlcpro.com).

### IF THE GARLAND HANGER DOES NOT FEEL TIGHT:

1. The pads may need to be adjusted outward one or more hole settings. Carefully take down the framer, adjust one or both of the extension rods, and repeat the steps above.
2. If the framer outer rubber pads feel tight and the whole assembly feels solid, but there's still some wiggle in the center of the framer, make sure the Wing nut has been tightened significantly and the "L" Bracket has been correctly installed.
3. Make sure the pads are positioned **SQUARELY** along the top of the door frame and are completely pressing firmly against solid wood or metal. Confirm that they are not hanging over the edge of a surface.

**FOR MORE INFORMATION OR ASSISTANCE INCLUDING VIDEO TRAINING INSTRUCTIONS, PLEASE VISIT [WWW.VLCPRO.COM](http://WWW.VLCPRO.COM)**



[WWW.VLCPRO.COM](http://WWW.VLCPRO.COM)

Copyright 2009 Village Lighting Co. All Rights Reserved  
Patent Pending